

2020

Public schools of
BROOKLINE

DRAFT by Matthew J
Gillis

NEW DRISCOLL PARKING OPTIONS

Consideration and Discussion of Options A, B, C and a requested D Option for more spaces, # TBD, fit into the property as efficiently and economically as possible via suggested conversion of some parallel street parking to perpendicular street parking.

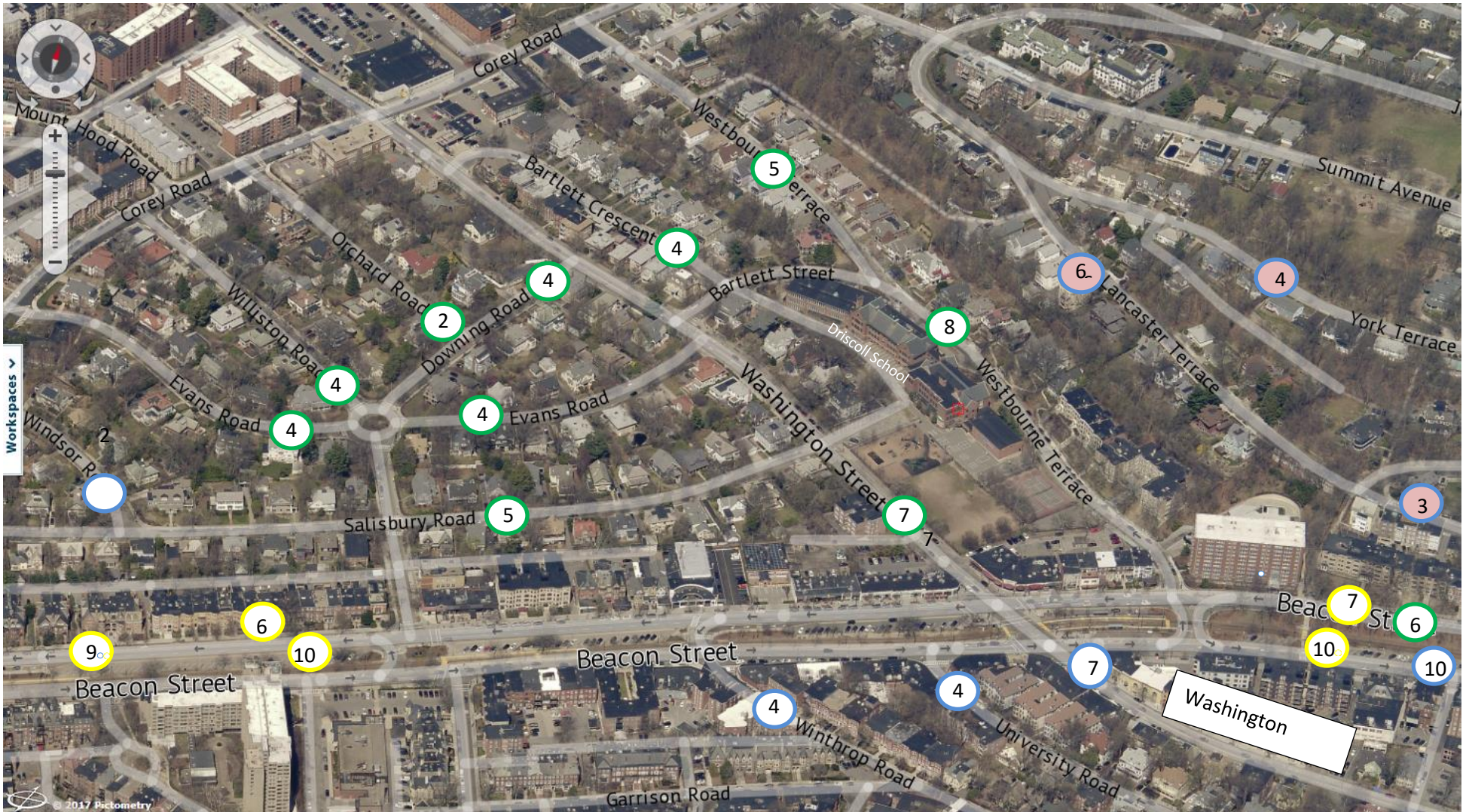
New Driscoll – Option D – School Principal and Director of Operations Preferred

Goal/Request: Increase more parking spaces to the site, or proximity to the site.

Method/Task: Site Plan To be revised to show more onsite parking by converting some street parking parallel spaces to street parking perpendicular spaces.

JLA to produce efficient and effective option to best balance all requests, number of spaces to best fit naturally in/around the site.

New Driscoll – Option C – Not Preferred



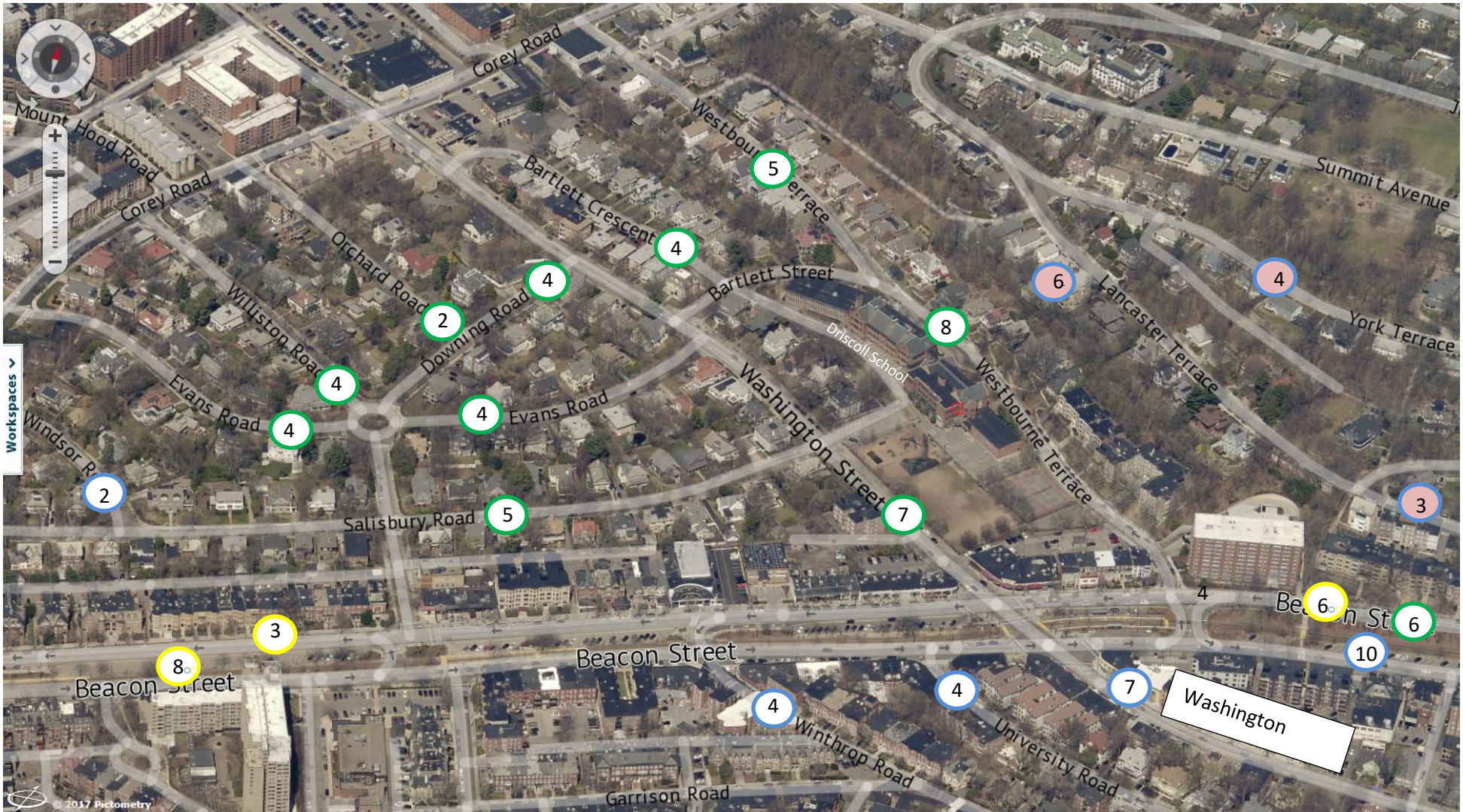
NEW Driscoll School Parking-Option C

Color Codes	Date	Note	Count	VAI Study Confirms
Green Circles	Approved 2018	No Change	58	N/A
Blue Circles	Approved Jan 2019	No Change	17	N/A
Yellow Circles	Req Feb 2020	New	42	Yes
Blue & Pink	Req Feb 2020	Complaints	13	Yes
DRAFT - Total Spaces			130	

Parking Options	C
Total On Site	0
Total New To Beacon	42
Rest of Neighborhood	88
Total Street Parking	130
% on Street Park	100%

Staff to Parking	Jan-19	Feb 2020
Projected staff	125	144
Spots needed	113	130
% of staff parking	90%	90%
Spaces breakdown		
On school property	25	0
On street parking	88	130

Option B – Not School Preferred

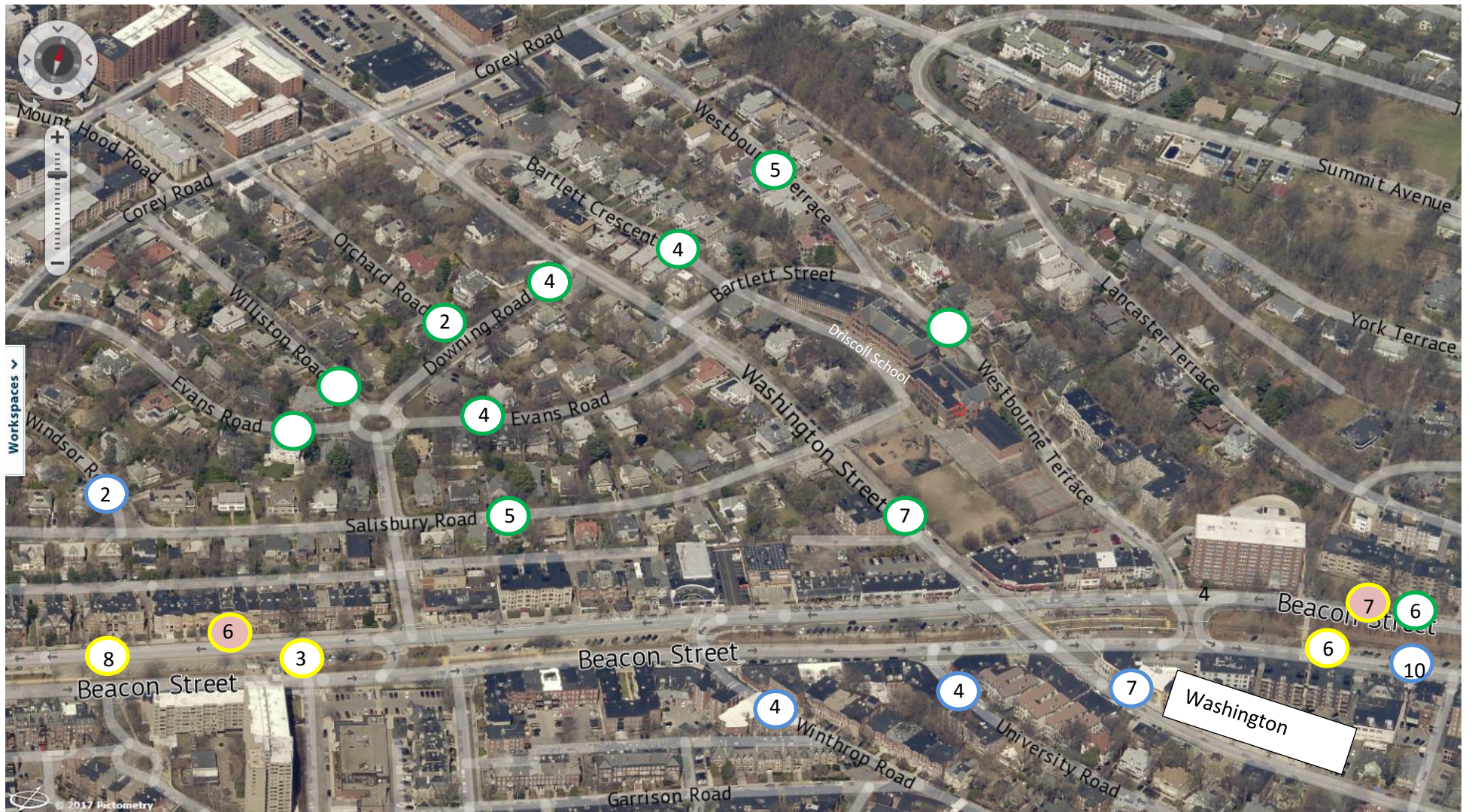


Driscoll School Parking Option B

Color Codes	Date	Note	Count	VAI Study Confirms
Green Circles	Approved 2018	No Change	58	N/A
Blue Circles	Approved Jan 2019	No Change	17	N/A
Yellow Circles	Req Feb 2020	New	17	Yes
Blue & Pink	Req Feb 2020	Complaints	13	Yes
DRAFT - Total Spaces			105	

Parking Options	B
Total On Site	25
Total New To Beacon	17
Rest of Neighborhood	88
Total Street Parking	105
% on Street Park	81%

Staff to Parking	Jan-19	Feb 2020
Projected staff	125	144
Spots needed	113	130
% of staff parking	90%	90%
Spaces breakdown		
On school property	25	25
On street parking	88	105



Driscoll School Parking Option A

Color Codes	Date	Note	Count	VAI Study Confirms
Green Circles	Approved 2018	No Change	58	N/A
Blue Circles	Approved Jan 2019	No Change	17	N/A
Yellow Circles	Req Feb 2020	New	17	Yes
Yellow & Pink	Req Feb 2020	Relocate	13	Yes
DRAFT - Total Spaces			105	

Parking Options	A
Total On Site	25
Total New to Beacon	30
Rest of Neighborhood	75
Total Street Parking	105
% on Street Park	81%

Staff to Parking	Jan-19	Feb 2020
Projected staff	125	144
Spots needed	113	130
% of staff parking	90%	90%
Spaces breakdown		
On school property	25	25
On street parking	88	105